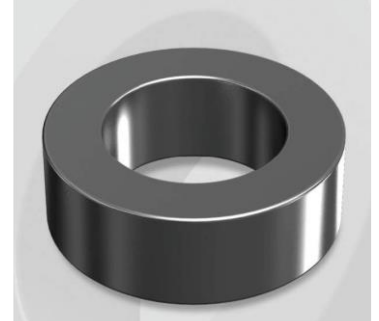


CH234060GT14

Electrical Characteristics

Material	Permeability (μ)	AL ± 8% (nH/N ²)	DCB (% min) @ 100 Oe	Coreloss (mW/cm ² , max) @ 50kHz, 1000G
High Flux GT	60	80	77.4	180

OD : 234



Core Dimensions

Dimensions		Uncoated		Coated		Color	Packaging
		(mm)	(inch)	(mm)	(inch)		
OD	(Max)	23.57	0.928	24.30	0.957	Black	Box Qty = 450 pcs
ID	(min)	14.40	0.567	13.77	0.542		
HT	(max)	14.00	0.551	14.70	0.579		

Physical Characteristics

Cross Section (A)	Path Length (ℓ)	Window Area (Wa)	Volume (V)	Breakdown Voltage (Vac)
0.611 cm ²	5.88 cm	1.49 cm ²	3.592 cm ³	1,000
0.095 in ²	2.315 in	294,060 cmil	0.2192 in ³	

Winding Information

0% Winding length/turn (cm)		
4.015		
40% winding factor Surface Area (cm ²)		
32.68		
40% Wound Di.(mm)		
OD	ID	HT
27.76	9.02	18.92

Typical DC Bias Performance

